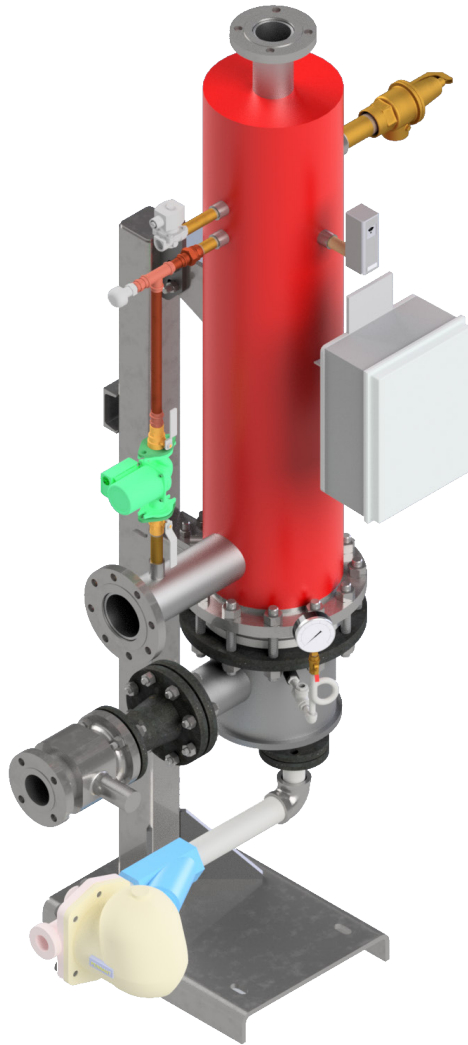


HX2 SERIES

Semi-Instantaneous Water Heaters



FOR RECOVERY
RATES TO 150 GPM

RECO
USA 
The Water Heater and Pressure Vessel Experts

INTRODUCING THE HX2

The **HX2** Series is RECO USA's next generation of semi-instantaneous water heaters. Lighter, smaller, and more thermally efficient than ever before, the **HX2** delivers up to 6.0 million BTU/HR of heating as standard, with higher capacities possible.

At the heart of the **HX2** is the Control Master® programmable control panel. It offers both local and remote control and ties into building automation systems using standard Modbus® and BACnet® communications protocols. The Control Master® also offers fault detection and isolation, multiple set point capability, and maintains a log of all alarm events for full operational oversight.

The **HX2** satisfies varying flow and heating demands by tightly controlling flow through the heating bundle. An electrically operated, V-ball control valve with 100:1 rangeability modulates the incoming heating medium to provide precise outlet temperatures over the entire range of operation.

Standard options for the **HX2** include single or double walled heating tubes and 316L stainless steel or Cu-Ni pressure vessels. These units can also accommodate steam, hot water, or boiler water as the heating medium for added system flexibility.

Putting it all together, the **HX2** is the perfect choice for handling the high demands and peak loading requirements for hot water in any commercial, institutional, industrial, or educational setting.



We Are RECO USA: The Water Heater and Pressure Vessel Experts

— PERFORMANCE RATINGS —

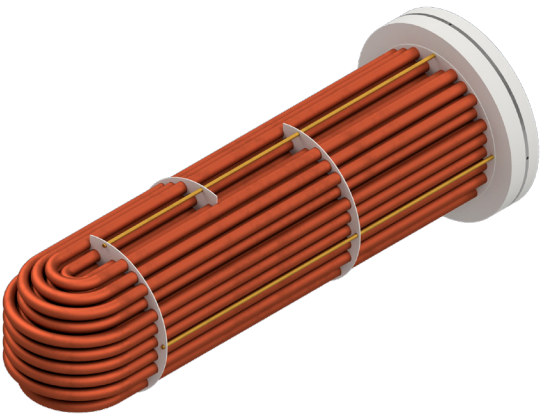
- Recovery ratesto 150 GPM
- Steam supply pressure to 100 PSIG
- Cold water inlet pressureto 150 PSIG
- Hot water outlet temperatureto 210 °F
- Design rating ASME Boiler and Pressure Vessel Code “U” stamp

QUALITY

- The industry's best warranty - the **HX2** tank is warrantied for 10 years against defects in material and workmanship and the tube bundle is warrantied for 5 years.
- Welded and flanged connections maximize overall unit reliability.
- ASME code constructed and stamped stainless steel tanks are passivated to ASTM A380 and A967 requirements, extending the years of confident, reliable service.
- All major control panel components are UL listed, providing added confidence for long-life expectancy.

SAFETY

- The **HX2** safety features include a pressure/temperature relief valve, solenoid dump valve controlled by an independent temperature sensor, and a fail-closed inlet control valve.
- All wetted parts on the heated water side are lead-free and comply with the requirements of NSF Standard 61 and the U.S. Safe Drinking Water Act.
- All units can be built to International Building Council standards for seismic stresses and loadings.
- Double walled heating tubes are a standard feature on all **HX2** units at no additional cost.



CONVENIENCE

- All heating bundles on vertical units are bottom removable, allowing for inspection or replacement without the need for overhead clearances or special rigging equipment.
- Horizontal and vertical options offer broad installation flexibility wherever space is limited.
- Lightweight, compact design fits through standard doorways and freight elevators.
- Our unique **HX2** insulation jacket detaches and re-attaches in seconds, simplifying all inspection and maintenance tasks.

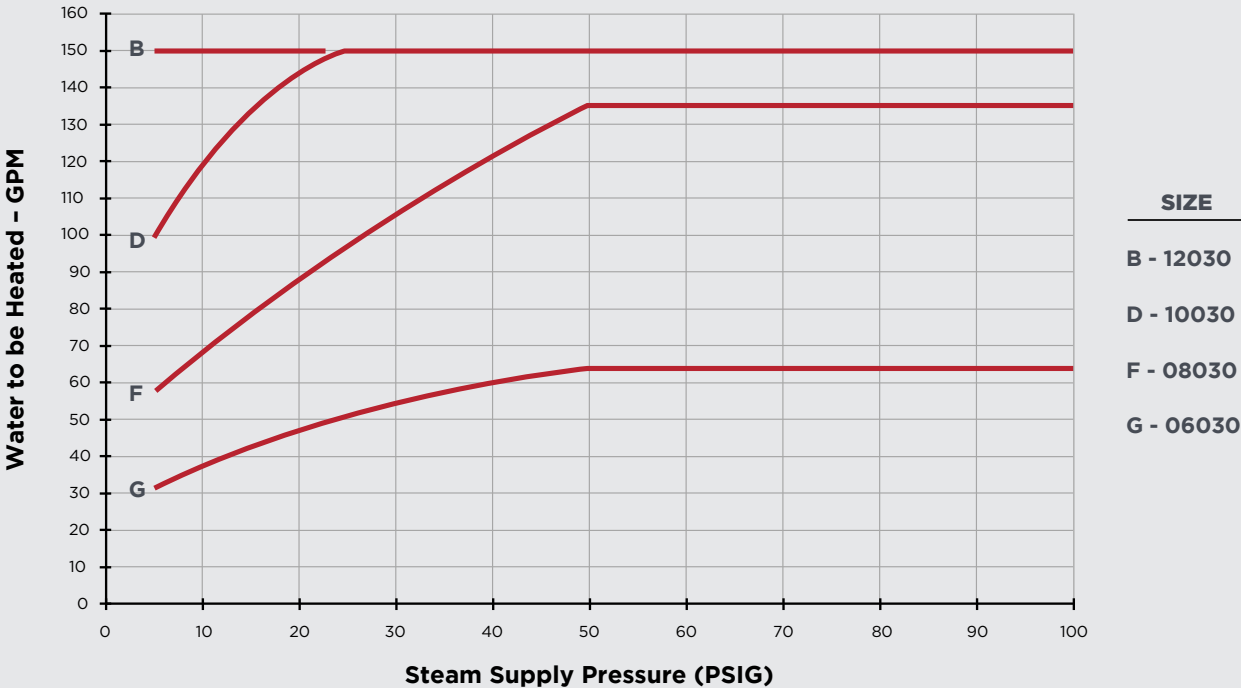
— MAJOR MATERIALS OF CONSTRUCTION —

- Flanges.....Carbon steel (SA-105) and stainless steel (SA-182-F316L)
- Heating tubes.....Copper (SB-111-C122 or SB-75-C122)
- Support stand..... Carbon steel (SA-36)
- Pressure Vessel..... Stainless steel (SA-312-TP316/316L) or Cu-Ni (SB 467)
- Tube sheets.....Stainless steel (240-304/304L) and carbon steel (SA-516-70)

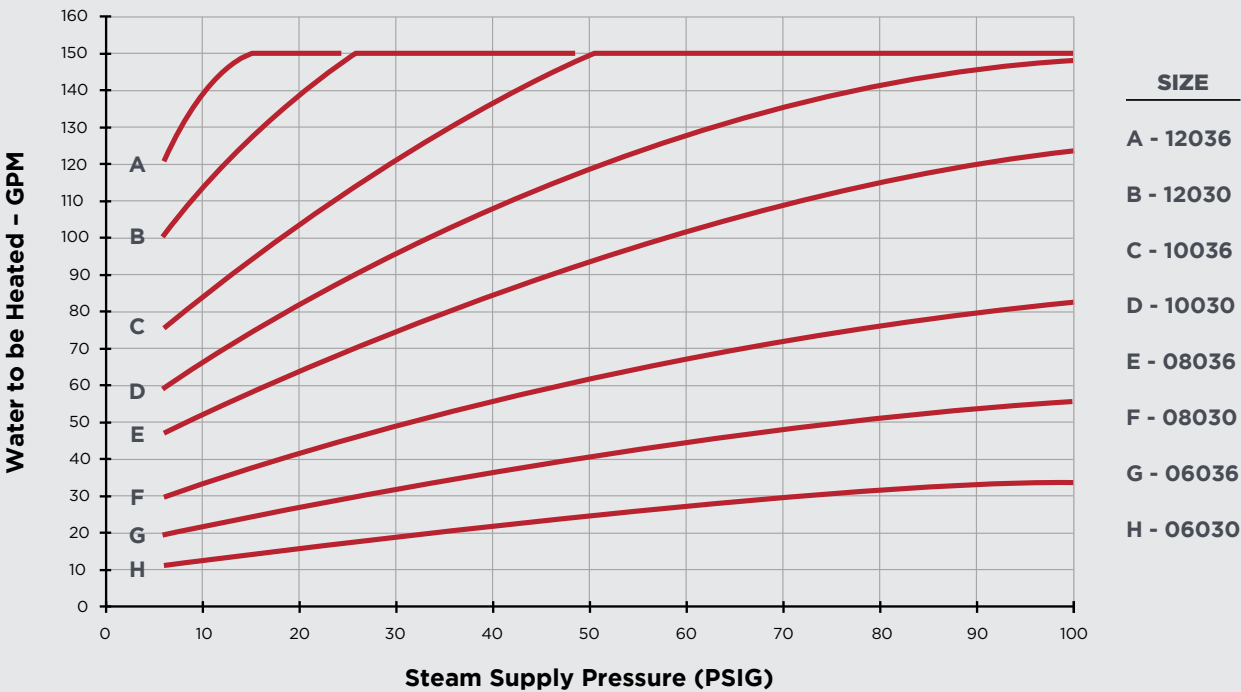
HX2 RATING CHARTS

Using these charts is easy. Starting with the amount of heating required (80 °F or 100°F) and tube type specified (single wall or double walled), select the appropriate chart.

40 °F to 120 °F Heating - Single Wall, ½" O.D. Copper Tubes



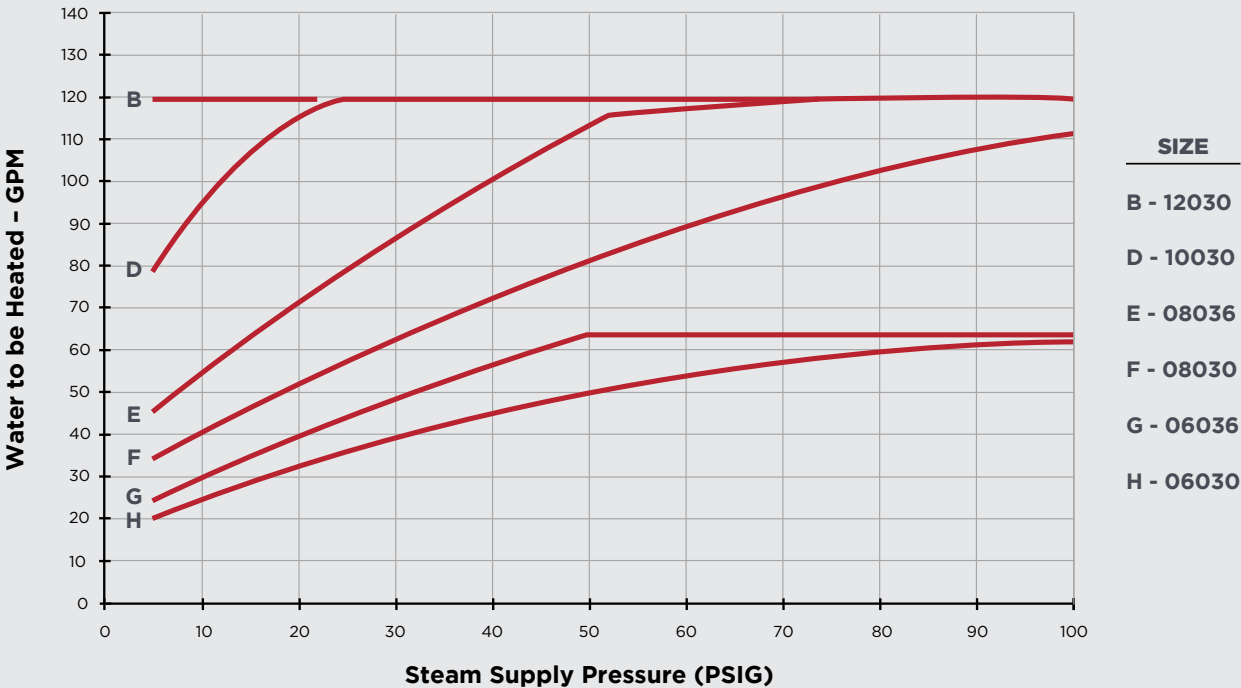
40 °F to 120 °F Heating - Double Wall, ¾" O.D. Copper Tubes



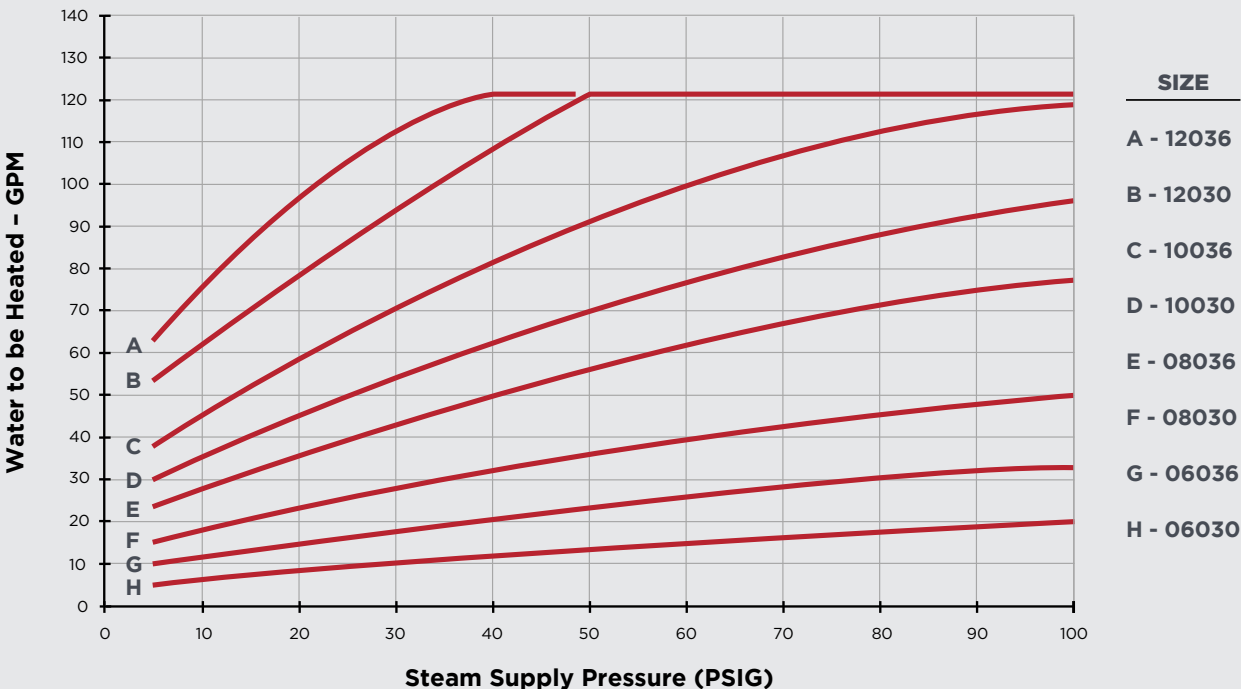
Note: For units using hot water as the heating medium, contact RECO USA.

On that chart, find the point where the available Steam Supply Pressure (X-axis) and amount of Water to be Heated (Y-axis) lines intersect to determine the **HX2** size needed. If this point falls between two rating curves, choose the larger size.

40 °F to 140 °F Heating - Single Wall, ½" O.D. Copper Tubes

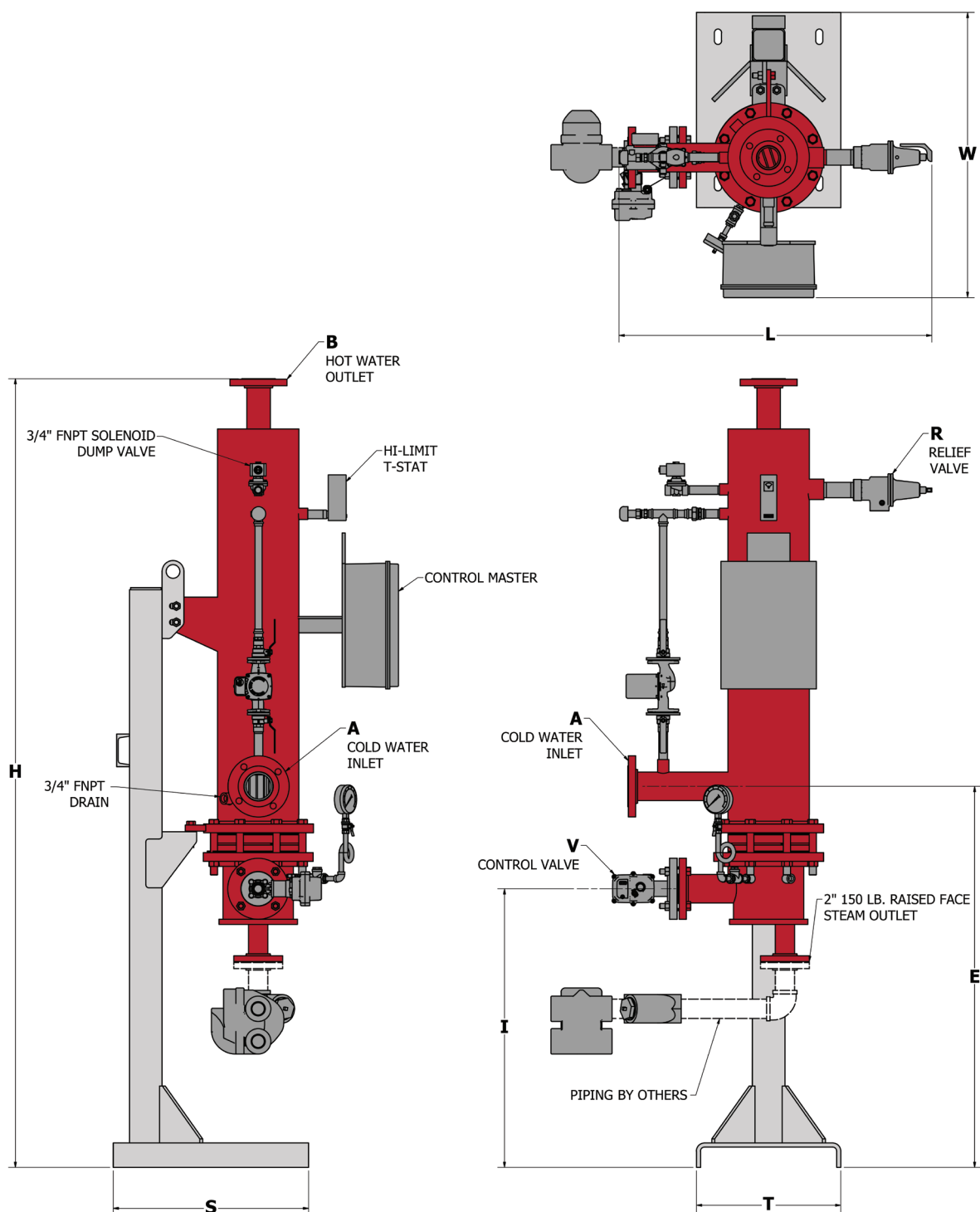


40 °F to 140 °F Heating - Double Wall, ¾" O.D. Copper Tubes

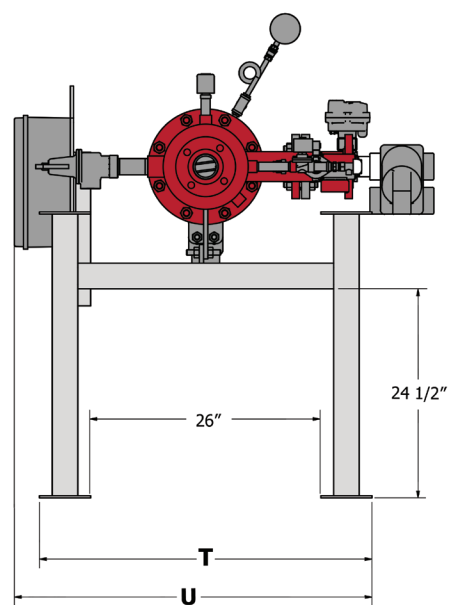
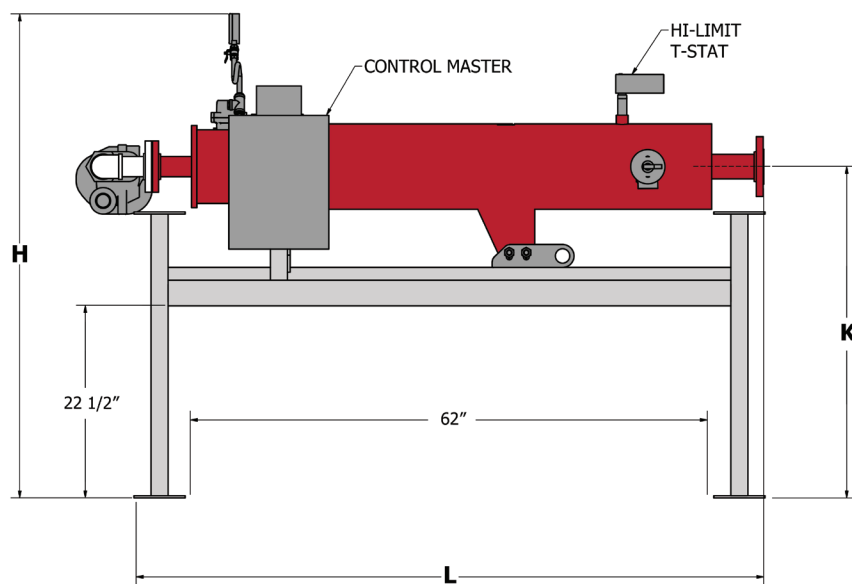
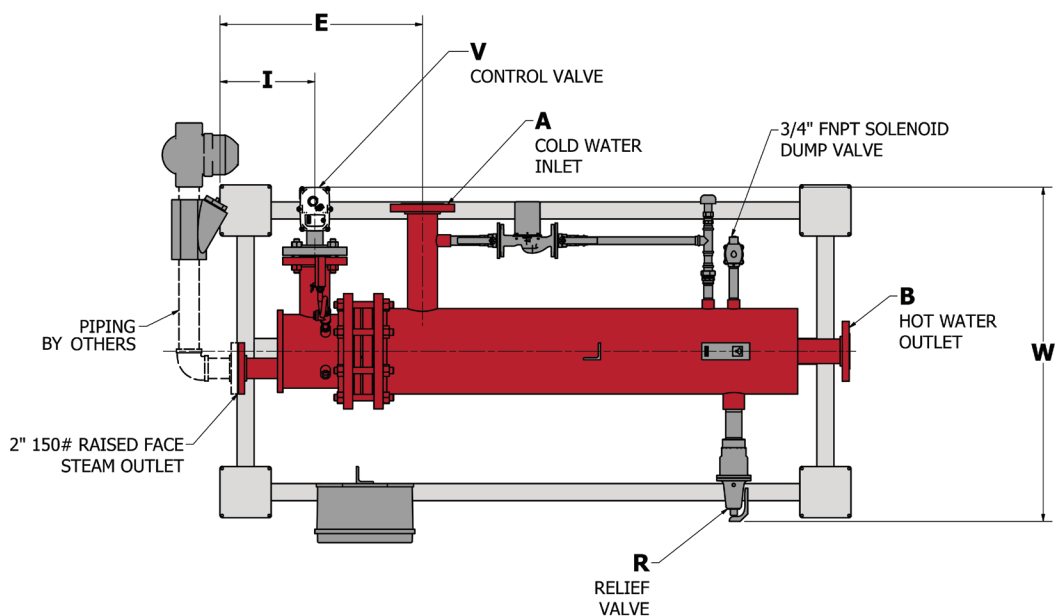


Note: For units using hot water as the heating medium, contact RECO USA.

HX2 DIMENSIONS



SIZE	A	B	E (in.)	H (in.)	I (in.)	L (in.)	R (in.)	S (in.)	T (in.)	V (in.)	W (in.)
0630/0636	2" 150 LB. RFSO	1.5" 150 LB. RFSO	46.75	95	34.25	32	0.75 FNPT	24	17.75	1" FNPT / 1.25" FNPT	33
0830/0836	3" 150 LB. RFSO	2.5" 150 LB. RFSO	46.75	97	34.25	38	1.5 FNPT	24	17.75	1.5" FNPT / 2" FNPT	35
1030/1036	4" 150 LB. RFSO	3" 150 LB. RFSO	46.75	99	34.75	48.5	1.5 FNPT	24	17.75	2.5" 150 LB. RFSO	37
1230/1236	4" 150 LB. RFSO	3" 150 LB. RFSO	46.75	100	34.75	49.5	1.5 FNPT	24	17.75	3" 150 LB. RFSO	39



SIZE	A	B	E (in.)	H (in.)	I (in.)	K (in.)	L (in.)	R (in.)	T (in.)	U (in.)	V (in.)	W (in.)
0630/0636	2" 150 LB. RFSO	1.5" 150 LB. RFSO	23.75	54.5	34.25	37.75	71.75	0.75 FNPT	39	41	1" FNPT / 1.25" FNPT	32
0830/0836	3" 150 LB. RFSO	2.5" 150 LB. RFSO	23.75	55.75	34.25	38.75	73.5	1.5 FNPT	39	41	1.5" FNPT / 2" FNPT	38
1030/1036	4" 150 LB. RFSO	3" 150 LB. RFSO	23.75	58.25	34.75	39.75	74	1.5 FNPT	39	41	2.5" 150 LB. RFSO	48.5
1230/1236	4" 150 LB. RFSO	3" 150 LB. RFSO	23.75	59	34.75	40.75	77	1.5 FNPT	39	41	3" 150 LB. RFSO	49.5

We Are RECO USA: The Water Heater and Pressure Vessel Experts



For over a century the RECO USA name has meant quality. Today we are recognized as one of the country's leading suppliers of water heaters and pressure vessels for the municipal, institutional, medical, industrial, pulp and paper, oil and gas, and chemical industries.

In fact, it is hard to find an industry, market, or application today that doesn't rely on the quality, safety, and convenience that RECO USA brings to their most critical services and processes.

To learn more, contact us or any one of our North American sales representatives.

**1839 Dunbar Road
Cayce, SC 29033
803.794.3360**

RECO-USA.com

**RECO
USA**
The Water Heater and Pressure Vessel Experts